

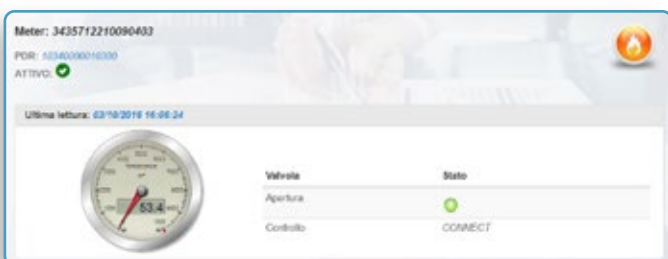
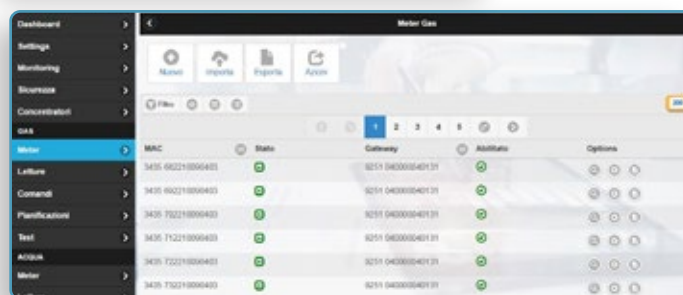
## Telereading Software

Software for remote management and remote control of the domestic users in the multi-utilities field.

- Modularity •
- Scalability •
- Interoperability •
- Safety •



The **Telereading software** have been designed and manufactured for the collection of data from smart meters for water, gas, energy, heat utilities, and are specially designed for Multi-utilities companies.



The integration of different smart meters is made possible thanks to the use of specific communication protocols in accordance with relevant regulations. They adapt to the management of devices in contexts point-to-point and point-to-multi-point.

The software can be divided into the following modules:

- **NM (Network Manager)**  
Management module of the concentrator network and communication with smart meters.
- **MDR (Meter Data Reading)**  
data acquisition module from the measuring groups.
- **MDM (Meter Data Management)**  
management module of the data and integration with management software.



Monthly consumption



Weekly consumption

